

BARGE SPECIFICATION



Cargo barge "CEVIK-1"

ENKA İNŞAAT VE SANAYİ A.Ş.

No.1, S. Zhanqabyly, BautiNo, 130502, Tupkaragan
Region, Mangistau Oblast, Republic of Kazakhstan
Phone: +7 72938 24 808, Fax: +7 72938 24 000
marine@enka.com
www.enka.com

BARGE SPECIFICATION "CEVIK-1"

CLASS AND FLAG DATA

Type	Pontoon
Year built / Shipyard	1983, Turkey
Class	RMRS
Class symbol	K★R3-RSN Pontoon for transportation services
Flag	Kazakhstan
Port of registry	Aktau
IMO number / or <u>Class number</u>	825448

DIMENSIONS

Length (overall)	63,20 m
Length (between perpendicular)	60.17 m
Breadth (moulded)	16,40 m
Depth (moulded)	4.0 m
Draft (summer)	2,93 m
Minimal operational draft (empty barge)	0.8 m
Deadweight	2271
Registered gross tonnage	1031

NCHOR AND MOORING EQUIPMENT

Anchor windlass	1 x GD-AW 2503
Anchors	2 x Hall type, 700 kgs
Chains (length, caliber)	137 m / 165 m ; 22 mm (dia)

TOWING AND ANCHOR HANDLING EQUIPMENT

Towing bridle steel wire dimensions / SWL / MBL	36 mm / 20.7t / 92.1 t
Emergency towing wire dimensions and SWL / BL	70 m x 36 mm (dia) / 20.7 t / 92.1 t,
Towing strong points	3 x Smith Brackets WLL-50.0t
Fair leads	2 x SWL 40.0t
Bollards	16

DECK CAPACITY

Deck strength	6.0 tone
Clear deck dimensions (L x B)	53.5 x 14.4
Clear deck area	770.4

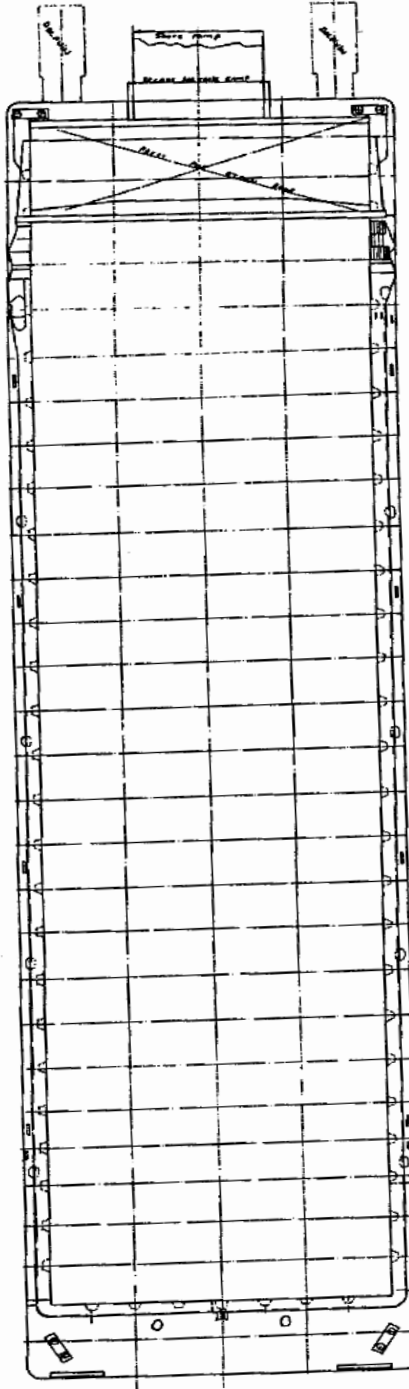
LIFE-SAVING APPLIANCES

Life buoy	4
Embarkation ladders	Means of access are available on two sides

**All the details are believed to be correct but not guaranteed and owners reserve the right to amend them*

BARGE SPECIFICATION "CEVIK-1"

GENERAL ARRANGEMENT PLAN



**All the details are believed to be correct but not guaranteed and owners reserve the right to amend them*