

BARGE SPECIFICATION



Cargo barge "EB-103"

ENKA İNŞAAT VE SANAYİ A.Ş.

No.1, S. Zhangabylyy, Bautino, 130502, Tupkaragan
Region, Mangistau Oblast, Republic of Kazakhstan
Phone: +7 72938 24 808, Fax: +7 72938 24 000
marine@enka.com
www.enka.com

BARGE SPECIFICATION "EB-103"

CLASS AND FLAG DATA

Type	Pontoon (Open deck barge)
Year built / Shipyard	2010, Turkey
Class	BV
Class symbol	I ✕Hull Pontoon Coastal area restricted open sea service (Hs < 4 m)
Flag	Kazakistan
Port of registry	Aktau
IMO number / or <u>Class number</u>	17375N

DIMENSIONS

Length (overall)	85,6 m
Length (between perpendicular)	84.00 m
Breadth (moulded)	16,6 m
Depth (moulded)	3,75 m
Draft (summer)	2,6 m
Minimal operational draft (empty barge)	0.8 m
Deadweight	2551 tons
Registered gross tonnage	1419

ANCHOR AND MOORING EQUIPMENT

Anchor windlass	GD.AW 2503
Anchors	2 x 900kg Hall type
Chains (length, caliber)	357,5 x 24 mm (Q3a)

TOWING AND ANCHOR HANDLING EQUIPMENT

Towing bridle steel wire dimensions / SWL / MBL	36 mm / 16.6t / 103 t
Emergency towing wire dimensions / SWL / MBL	95 m x 36 mm / SWL – 16.6 t / MBL – 103 t
Towing strong points	3 x Smith Brackets WLL-50.0t
Fair leads	2 x SWL 40.0t
Bollards	12 x SWL 80 kN, 6 x SWL 200 kN

TANKS FULL CAPACITIES

Fresh water tanks	298.5 m ³
Sewage water tanks	447.7 m ³

TRANSFER RATES

Fresh water	100 m ³ /h
Sewage water	100 m ³ /h

DECK CAPACITY

Deck strength	Cargo deck load–14 t/m ² ; vehicles : single axel/single wheeled–10t; single axel/dual wheeled – 20t;
Clear deck dimensions (L x B)	12.8 m x 66 m
Clear deck area	858 m ²
Fixed cargo securing devices	36 pcs SWL- 245 kN

PERFORMANCE

Bollards	6 x 20 tone (D20), 12 x 8 tone (D8)
----------	-------------------------------------

FIREFIGHTING EQUIPMENT AND POLLUTION PREVENTION EQUIPMENT

Portable fire extinguishers	2
-----------------------------	---

**All the details are believed to be correct but not guaranteed and owners reserve the right to amend them*

BARGE SPECIFICATION "EB-103"

LIFE-SAVING APPLIANCES

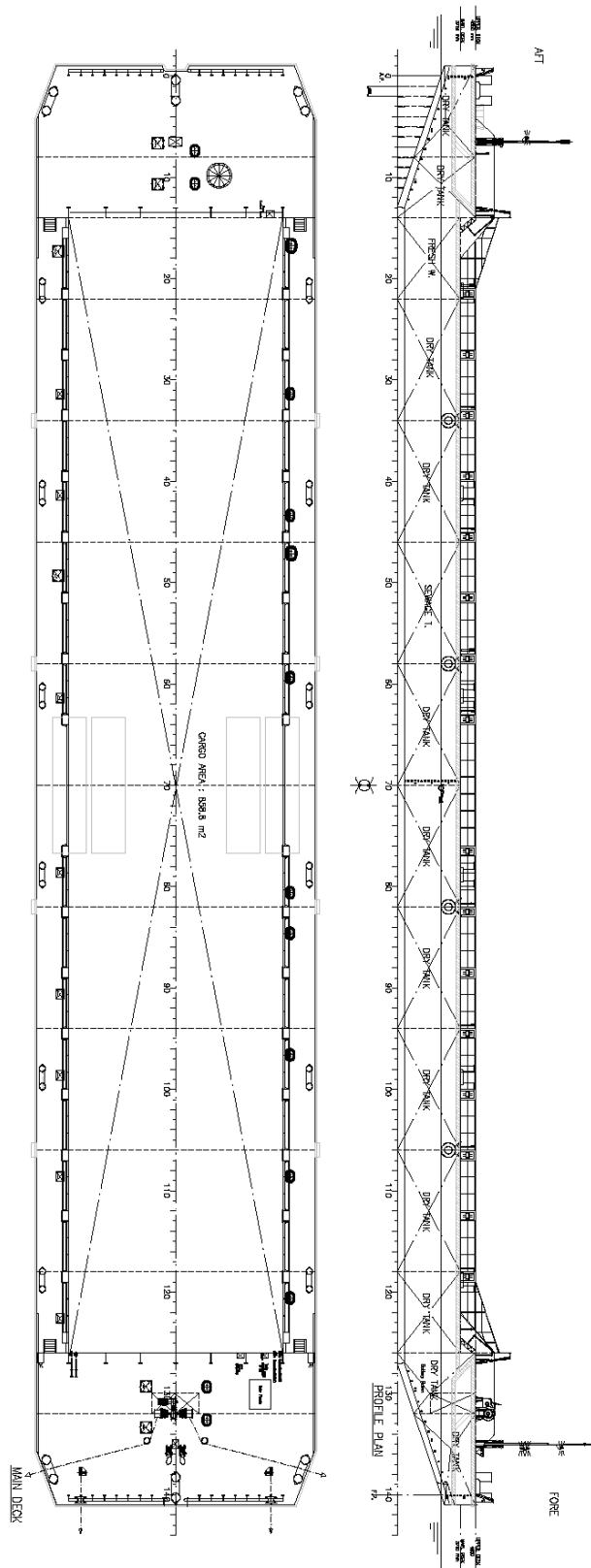
Life buoy 4
Embarkation ladders Means of access are available on two sides

TANK NAME	100% CAPACITY
Dry tank 01	237,5 m ³
Dry tank 02	253,5 m ³
Dry tank 03	298,5 m ³
Dry tank 04	447,7 m ³
Dry tank 05	447,7 m ³
Dry tank 06	447,7 m ³
Dry tank 07	447,7 m ³
Dry tank 08	447,7 m ³
Sewage tank 09	447,7 m ³
Dry tank 10	447,7 m ³
Dry tank 11	447,7 m ³
Fresh water tank 12	298,5 m ³
Dry tank 13	253,5 m ³
Dry tank 14	237,5 m ³

**All the details are believed to be correct but not guaranteed and owners reserve the right to amend them*

BARGE SPECIFICATION "EB-103"

GENERAL ARRANGEMENT PLAN



**All the details are believed to be correct but not guaranteed and owners reserve the right to amend them*