



## Spreader / Spud barge "EB-106"

**ENKA İNŞAAT VE SANAYİ A.Ş.**

No.1, S. Zhangabyly, BautıNo, 130502, Tupkaragan  
Region, Mangistau Oblast, Republic of Kazakhstan  
Phone: +7 72938 24 808, Fax: +7 72938 24 000  
marine@enka.com  
www.enka.com

# BARGE SPECIFICATION "EB-106"

## CLASS AND FLAG DATA

Type	Pontoon (spreader / spud)
Year built / Shipyard	2010, Turkey
Class	BV
Class symbol	I ✕ Hull Pontoon Coastal area restricted open sea service (Hs < 4 m)
Flag	Kazakhstan
Port of registry	Aktau
IMO number / or <u>Class number</u>	17472T

## DIMENSIONS

Length (overall)	85.20 m
Length (between perpendicular)	84.00 m
Breadth (moulded)	16.6 m
Depth (moulded)	3.75 m
Draft (summer)	2.6 m
Minimal operational draft (with deck equipment)	0.9 m
Deadweight	2665 tons
Registered gross tonnage	1413

## MACHINERIES

Auxiliary diesel-generators	SDMO 300 KVA ; SDMO 66 KVA
Power pack for hydraulic winches	2 x 90kW 250 bar

## AUXILIARY EQUIPMENT

Anchor handling / Mooring Winches	4 winches with rated pull 35 t model PHD35T
Spud System	2 spud poles operating by electrical winches D= 610 mm x 22 mm L= 16960mm

## ANCHOR AND MOORING EQUIPMENT

Anchor windlass	GD.AW - 2503
Anchors	2 x 900 Kgs Hall Type a Anchor
Chains (length, caliber)	357,5 m x 24 mm (Q3)
Delta Flipper anchor	4 x 5 t

## TOWING AND ANCHOR HANDLING EQUIPMENT

AH winch / drum	35 t / Single drum / 55 t pull at 1 <sup>st</sup> layer
Towing bridle steel wire dimensions / SWL / MBL	38 mm / 18.6t / 103 t
Emergency towing wire dimensions and SWL / BL	95m x 38 mm (dia)SWL - 18.6 toneBL - 103 tone
AH wire dimensions and / MBL	4 x 500m x 44mm / MBL = 1350 kN
Stern / Bow Roller fairleads	4 x SWL 15 t
Towing strong points	3 x Smith Brackets WLL-50.0t
Fair leads	2 x SWL 40.0t
Bollards	15 x SWL 80 kN, 3 x SWL 200 kN

## TANKS FULL CAPACITIES

Sewage water tanks	30 m <sup>3</sup>
--------------------	-------------------

## TRANSFER RATES

Sewage water	80m <sup>3</sup> /h
--------------	---------------------

## DECK CAPACITY

Deck strength	Cargo deck load-14 t/m <sup>2</sup> ; vehicles : single axel/single wheeled-10t;
Clear deck dimensions (L x B )	12.8 m x 66 m
Clear deck area	858 m <sup>2</sup>
Fixed cargo securing devices	34 pcs SWL - 245 kN

## FIREFIGHTING EQUIPMENT AND POLLUTION PREVENTION EQUIPMENT

Portable fire extinguishers	6
Oil spill kit	1

*\*All the details are believed to be correct but not guaranteed and owners reserve the right to amend them*

# BARGE SPECIFICATION "EB-106"

## LIFE-SAVING APPLIANCES

Inflatable life raft	1 x 10
Life buoy	4
Life jacket	4 (additional life jackets can be provided as necessary)
Embarkation ladders	Means of access are available on two sides

## ACCOMMODATION

Work rooms for a work shift	1 x barge master office
	1 x seamen room
	1 x workshop / store room

## TANK NAME

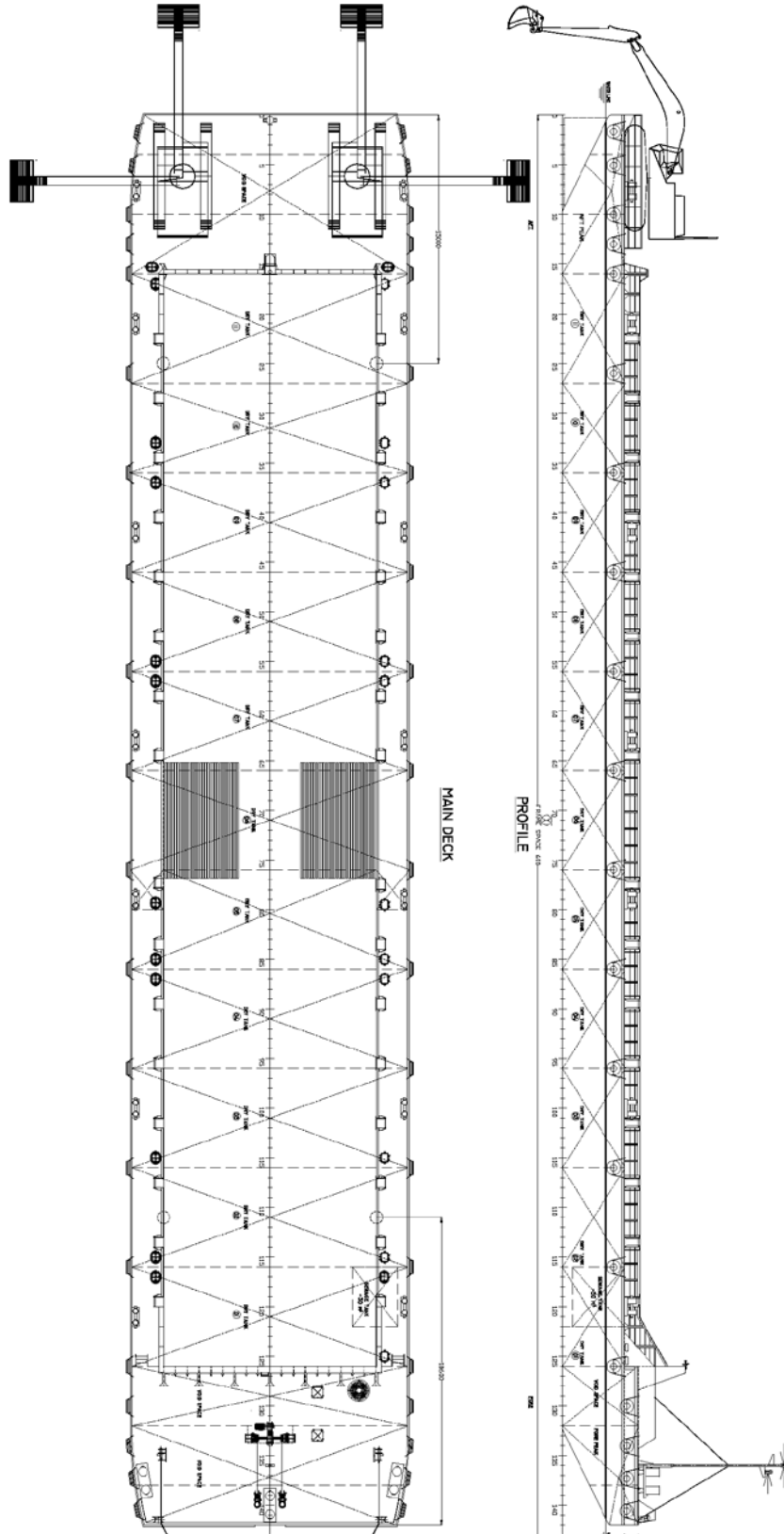
## 100% CAPACITY

Dry tank 01	342,4 m <sup>3</sup>
Dry tank 02	373,3 m <sup>3</sup>
Dry tank 03	373,3 m <sup>3</sup>
Dry tank 04	373,3 m <sup>3</sup>
Dry tank 05	373,3 m <sup>3</sup>
Dry tank 06	373,3 m <sup>3</sup>
Dry tank 07	373,3 m <sup>3</sup>
Dry tank 08	373,3 m <sup>3</sup>
Dry tank 09	373,3 m <sup>3</sup>
Dry tank 10	336,0 m <sup>3</sup>
Dry tank 11	410,7 m <sup>3</sup>
Aft Peak	451.8 m <sup>3</sup>
Void Space	224.0 m <sup>3</sup>
Fore Peak	302.4 m <sup>3</sup>
Sewage tank	31.0 m <sup>3</sup>

*\*All the details are believed to be correct but not guaranteed and owners reserve the right to amend them*

# BARGE SPECIFICATION "EB-106"

## GENERAL ARRANGEMENT PLAN



*\*All the details are believed to be correct but not guaranteed and owners reserve the right to amend them*